

# Global Seeps

## Offshore Oil Slick Database

Global Seeps is a non-exclusive database of offshore oil slicks, constructed by systematically screening the World's offshore basins.

Global Seeps data, covering approximately 60 million km<sup>2</sup> of offshore basins, is a cost-effective resource for risk-ranking new exploration regions and for baseline oil pollution mapping.

In early 2007 the database was expanded to cover more than 2 million km<sup>2</sup> of the Arctic.

Global Seeps is the definitive offshore oil slicks database for the worldwide exploration industry, derived using both archive and newly programmed satellite imagery.

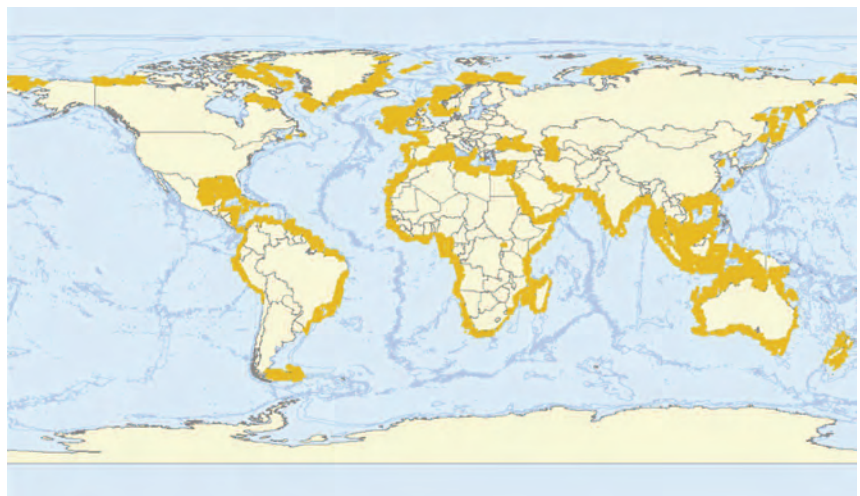
This data is used widely as a cost-effective risk-ranking tool prior to new exploration.

- Worldwide dual coverage data
- Accuracy - high resolution Synthetic Aperture Radar (SAR) data ensures all slicks are captured
- Slick characterisation – identifying natural seepage and man-made pollution
- Scalable and future proof – upgraded with new data and new areas
- Availability – GIS-ready results delivered direct to the customer

Infoterra employs an experienced team skilled in oil slick identification and characterisation. All Global Seeps study areas are produced to a consistently high standard using a proven methodology and our certified Quality Management System.

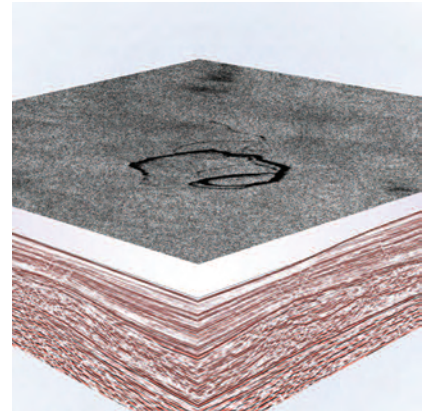
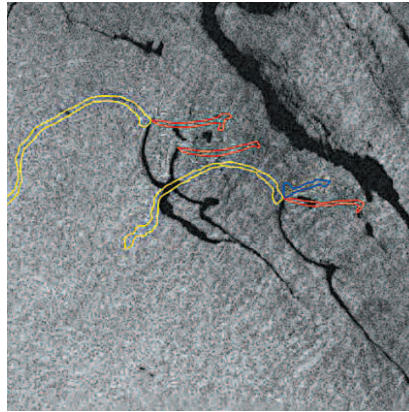
The Global Seeps database is delivered as a plug & go GIS product and is available on a local, regional or global license. Infoterra can host the dataset making it available to multiple users across an organisation using secure web access.

In early 2007 more than 2 million km<sup>2</sup> of the Arctic was captured and added to the database. This data includes Greenland, Mackenzie Delta, Chuckchi and Hudson Strait, areas which are opening up to hydrocarbon exploration.



Global Seeps database coverage





## Applications

The Global Seeps database is an ideal tool for:

- Screening of frontier basins
- Obtaining spatial characteristics of the oil slick over areas of existing production
- Planning surface geochemical programmes
- Initial environmental risk assessment, environmental impact statement or a full environmental baseline

## Data Specification

Global Seeps data comprises a series of deliverables in GIS digital format for every study area.

- Scene interpretation results
  - scene outlines, metocean interpretation details, ship traffic and rig/platform information
- Slick interpretation results
  - slick source points, slick vectors, probable slick type and confidence levels
- Digital geo-coded calibrated data for the full scene at 100m resolution
- Slick subset images at 25m resolution

In addition Infoterra offers a full suite of additional options including; summary maps showing seep locations, individual hardcopy scene maps, coastal/hinterland imagery and geological interpretation extended from onshore to offshore.

**All the geo-information you need.**

### Infoterra Ltd.

Atlas House,  
41 Wembley Road,  
Leicester, LE3 1UT,  
United Kingdom.

T. +44 (0)116 273 2300

F. +44 (0)116 273 2400

E. [info@infoterra-global.com](mailto:info@infoterra-global.com)

[www.infoterra.co.uk](http://www.infoterra.co.uk)



We are continually improving our products and reserve the right to alter the above specifications at any time without notice. All trademarks and registered trademarks used herein are the property of their respective owners